

NHS Health Checks

North East Essex

Dr Farman Ali

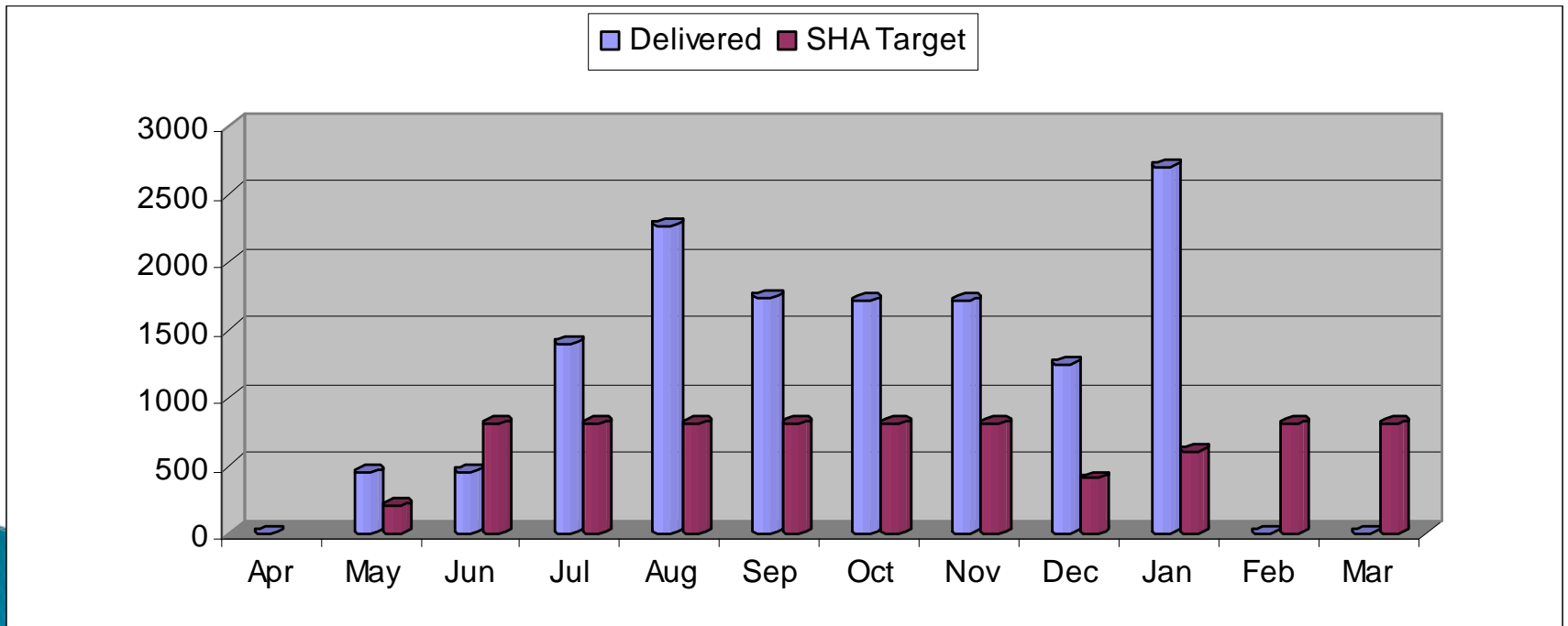
Penny Parker

Kerry-May Surtees

A decorative graphic at the bottom of the slide, featuring a blue wave-like shape on the left that transitions into a black horizontal band on the right.

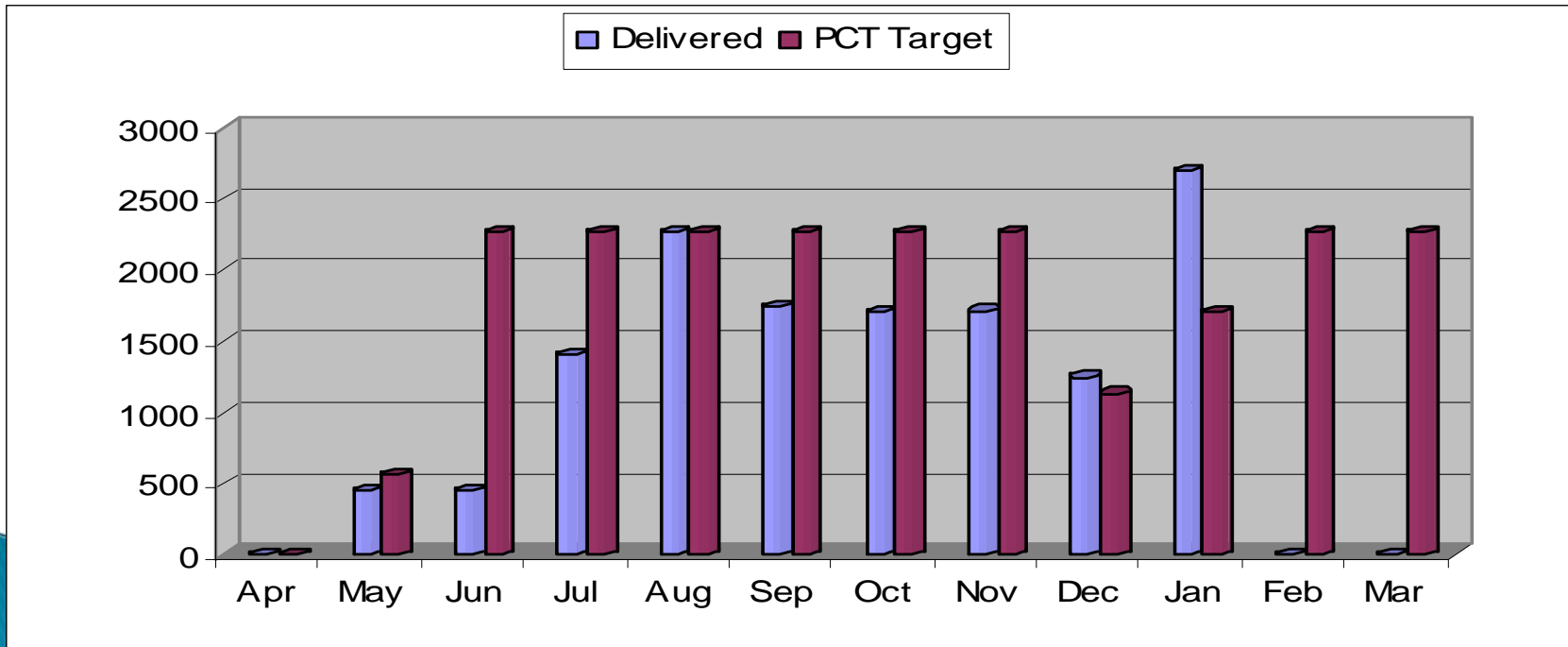
SHA Target

- ▶ Annual Target – 7687
- ▶ YTD Target – 6069
- ▶ YTD Delivered – 13688



PCT Target


- ▶ Annual Target – 21,547
- ▶ YTD Target – 17011
- ▶ YTD Delivered – 13688



Providers

- ▶ **GP Practices – 12,032**
- ▶ **Pharmacies - 122**
- ▶ **Anglian Community Enterprise - 1273**
 - i) Health Trainers Service
 - ii) Cornerstone
 - iii) Alternative Provider Service
 - iv) Mobile Unit Service
 - v) Hard to Reach Service
- ▶ **University of Essex - 261**

Programme Structure

- ▶ **Steering Group**
Headed by PBC
PBC, Medicines Management, ECSN, Anglian Community Enterprise CIC and Public Health
 - ▶ **Commissioning**
Senior Health Improvement Specialist
Admin Support
 - ▶ **Provider**
CVD Primary Prevention Coordinator
Admin Support
- 

GP Practices

Mixed Picture

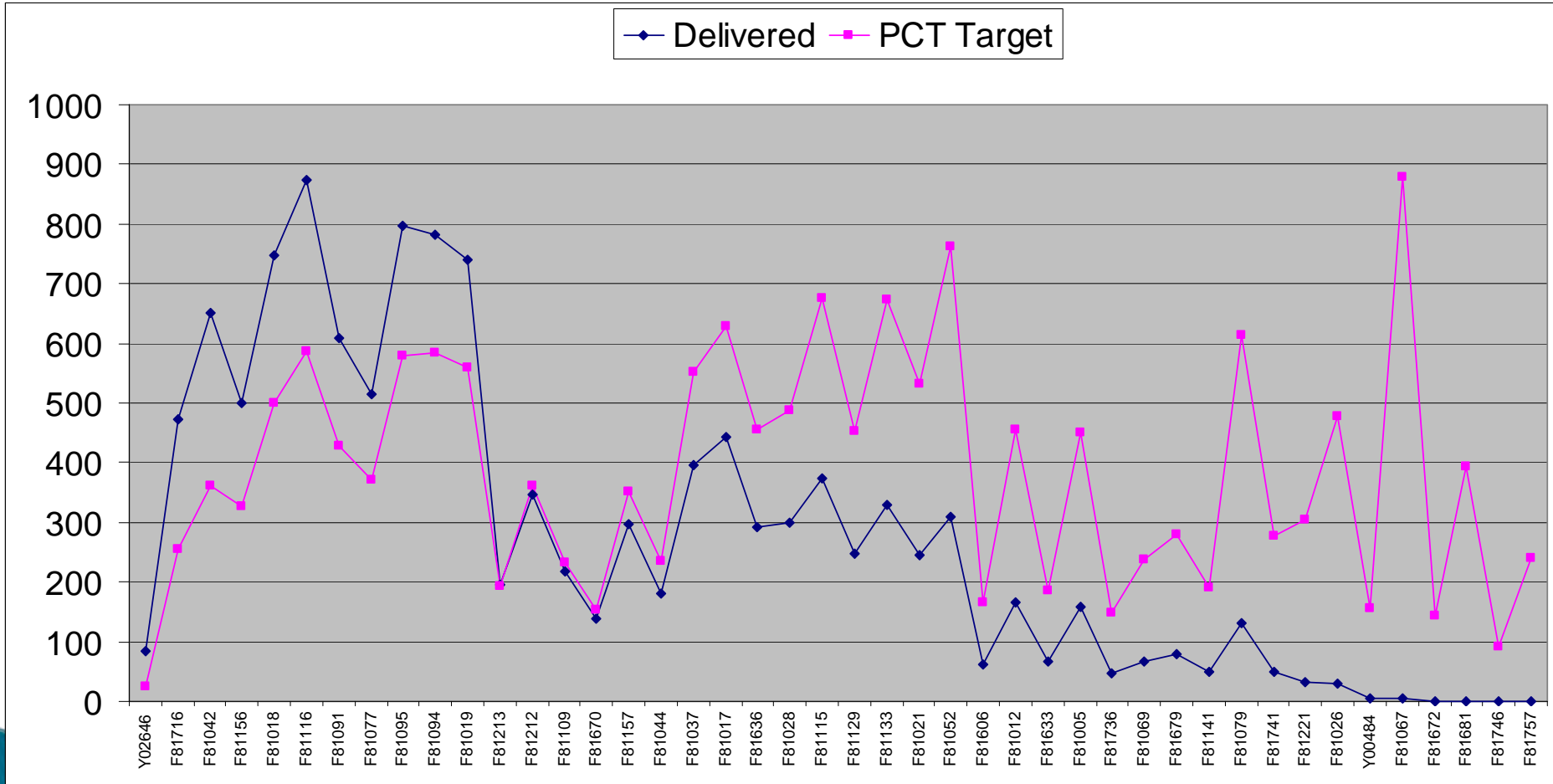
Total Practice = 44

Sign UP to the LES = 100%


High Performers = 27

Low Performers = 17

GP Practices



Common Issues

- ▶ **Too many LESs commissioned currently by Primary Care, Public Health and PBC – more than 25 LESs/DESS**
 - ▶ **Lack of space in the GP practice premises**
 - ▶ **Staff Shortage/Turnover**
 - ▶ **Lack of Partners'/Practice Manager's interest**
 - ▶ **Ambiguity about NHS Health Checks programme till PH White Paper**
 - ▶ **Less organised practices**
- 
- A decorative graphic element in the bottom-left corner of the slide, consisting of overlapping blue and black geometric shapes.

Alternative Approach

End of September Review

Practice with more than 30% variance – 15 practices

Central Invitations – Patients from 13 practices

Advantages:

- ▶ Non practice dependant approach
- ▶ Patient choice of providers

Disadvantages

- ▶ Low response rate
- ▶ Ineligible patients invited

2 Practices new delivery plan

Pharmacies

- ▶ Response to call for expression of interest – 97%
- ▶ Selected Pharmacies – 30
- ▶ Total NHS Health Checks delivered – 122

Selection Criteria

- ▶ Location – in areas of low performing practices
- ▶ Staff – NVQ level 3 for pharmacy assistant
- ▶ Premises – consultation room

Main Reasons for Low Uptake:

- ▶ Practice dependant
- ▶ New service
- ▶ Staff turnover
- ▶ IT related issues nhs.net email, access to QRisk2, etc

Anglia Community Enterprise

Health Trainers Service

Community Events – 24 per annum

- ▶ Clacton Air Show – 77
- ▶ Job Centre Plus – for benefit claimants – 179
- ▶ Mosque – 18
- ▶ Probation Service – ongoing

Benefits:

- ▶ Hard to Reach Groups are engaged
- ▶ Flexible tool and can be deployed as opportunity arises
- ▶ Partnership working
- ▶ Excellent tool for captive audience



Anglian Community Enterprise

Cornerstone



North East Essex

Opportunistic NHS Health Checks

- ▶ Background – well placed in community
- ▶ Town centre location with a good footfall
- ▶ Community Clinics across NE Essex

Anglia Community Enterprise

Alternative Provider Service

The service responds to

- ▶ Invitation letters by the GP offering alternative provider.
- ▶ Central invitations sent by Contractor Services.

Service provided at

- ▶ Colchester (Cornerstone) – operates on Saturdays
- ▶ Harwich
- ▶ Manningtree
- ▶ Clacton-on-Sea

Anglia Community Enterprise *Mobile Unit Service*

NHS
North East Essex



Anglian Community Enterprise

Mobile Unit Service

Target – 1000 to 1500

Eight weeks

Locations –

- ▶ low performing practice catchment area
- ▶ Areas of high needs (deprived)

Unit provided by Torton Bodies

Staffed by ACE

Average number of NHS Health Checks – 30 per day

Total delivered (end February) – 831

CVD Risk \geq 20% – 109 (13%)

Anglian Community Enterprise

Hard to Reach Service

Patients are invited by letters by GP practices

If patients do not respond to the second letter, the details are sent to Hard to Reach Provider.

Each patient is contacted by a healthcare professional to advise about the NHS Health Check

Patient booked in at place and time of convenience

Anglian Community Enterprise *Festive Season NHS Health Checks*

6 weeks project from Mid Dec
till end Jan 2011

Capture the new year
resolution and motivation

Mixed results
NHS Health Checks completed
-206

Other booked on and some still
inquiring about the 'Elf'
Checks



University of Essex

Staff and senior students at the UoE

Provider – Human Performance Unit of the UoE

Project from Jan – March 12 weeks

Estimated total NHS Health Check through the project till end of March – 800

Completed till end of Jan – 261

Excellent response from the target group

A decorative graphic in the bottom-left corner of the slide, featuring a blue gradient shape with a black diagonal line.

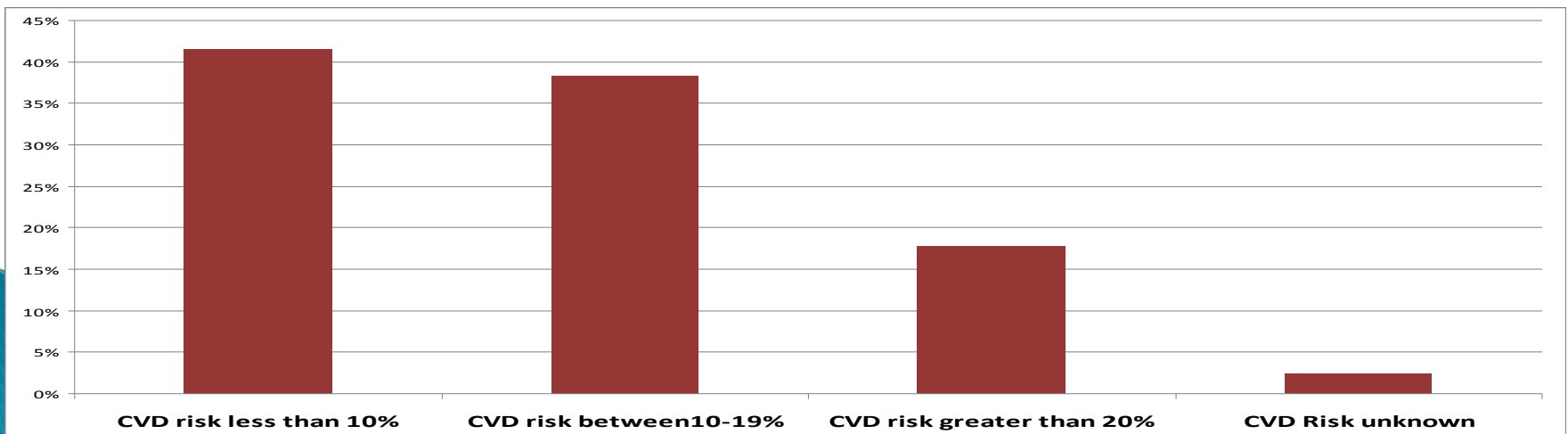
Outcomes of NHS Health Checks

Data based on 31 practices (70% of total 44)
Registered Population 40–74 years – 212,943

Patients aged 40–74 years – 94,688 (44%)
Eligible for NHS Health Checks – 62,254 (66%)

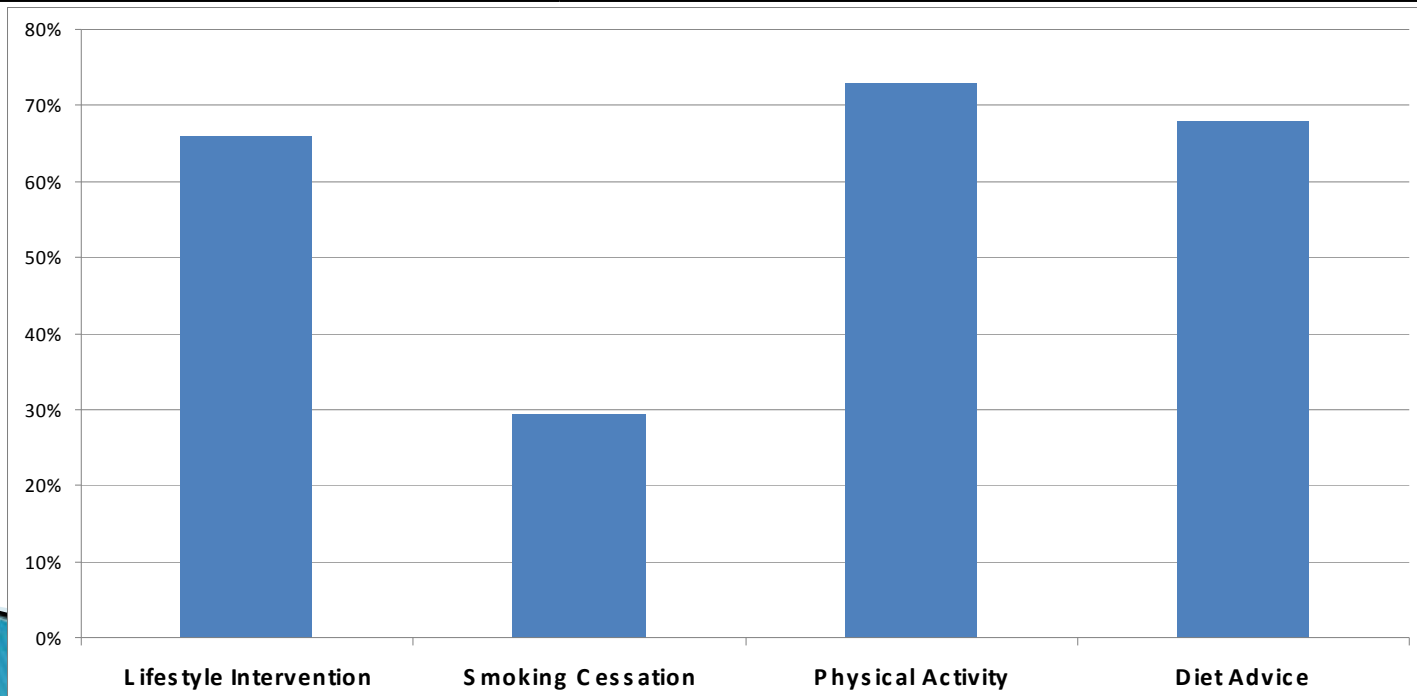
Total NHS Health Checks Completed – 10,979 (18%)

CVD Risk < 10% –	4550 (41%)
CVD Risk 11% to 19% –	4211 (38%)
CVD Risk >20% –	1950 (18%)
CVD Risk Not reported –	258 (2%)



Outcomes – lifestyles interventions

Lifestyle Intervention	7230	66%
Smoking Cessation	3218	29%
Physical Activity	8017	73%
Diet Advice	7466	68%



Outcomes – clinical

BP last 12 months \geq 140/90	3216	30%
Total chol \geq 5mmol/L	7334	71%
BMI \geq30	2775	27%
CVD Risk score \geq20%	1950	18%

Source: EQUIP audit February 2011

Outcomes – clinical new diagnosis

Diagnosis of CKD	238	2%
Diagnosis DM	90	1%
Statin therapy	928	8%
Anti- hypertensive therapy	425	4%

Source: EQUIP audit February 2011

Any Questions

