

Optimizing effectiveness of the NHS Health Check programme in Hull:

Delivering CVD services in local government

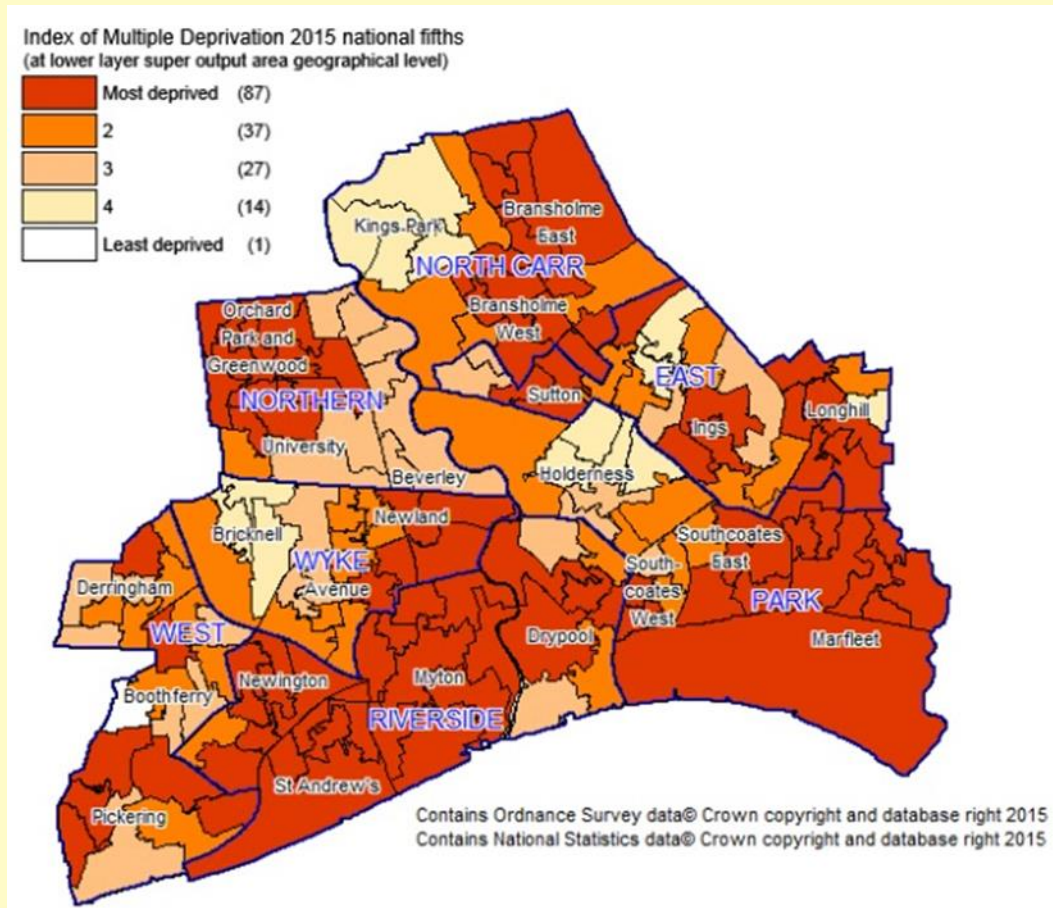
Sally Barlow

Public Health Lead

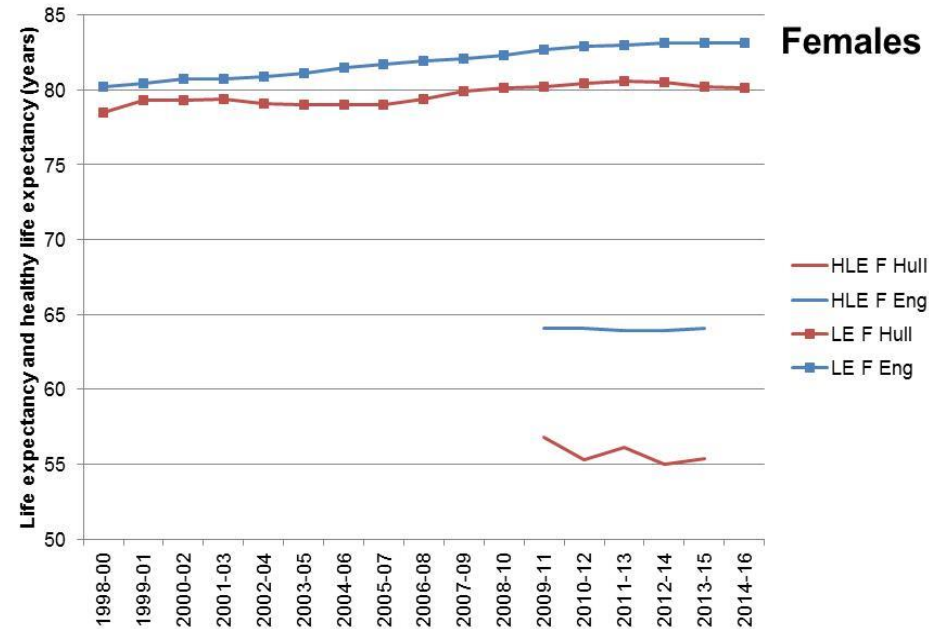
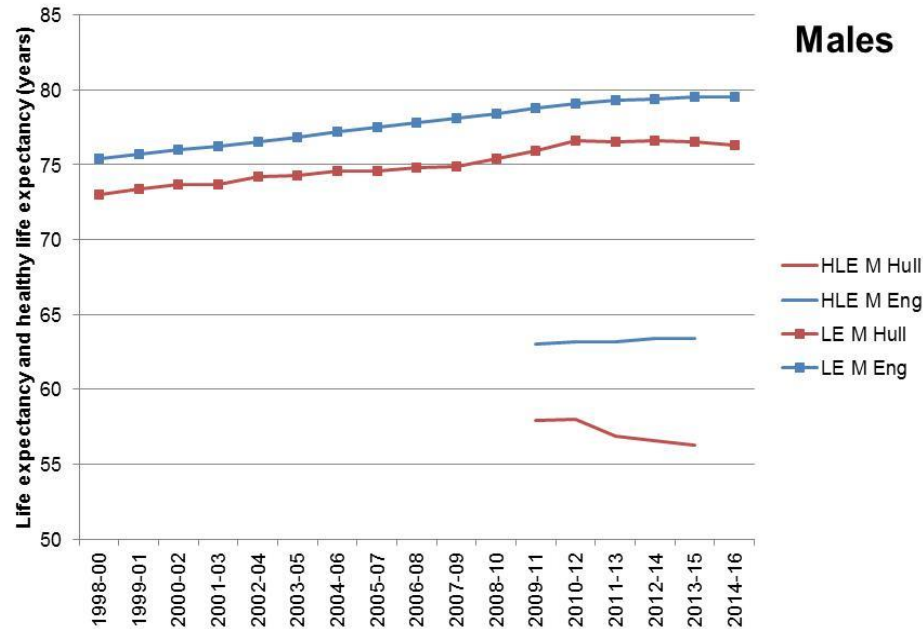
Overview

- Introduction to the picture in Hull
- A case for remodelling provision
- Incentivised uptake
- Future implications

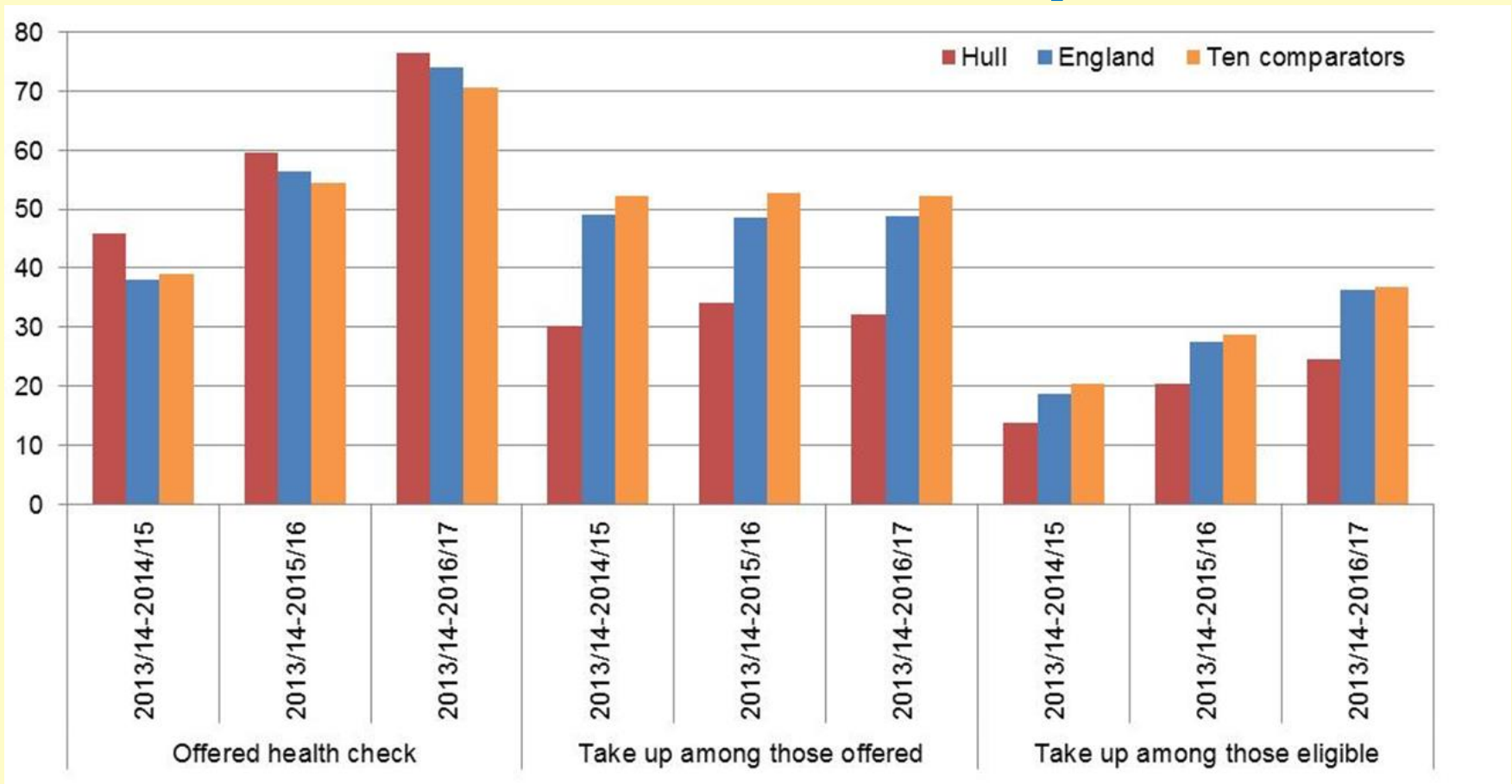
Index of Multiple Deprivation 2015 national fifths



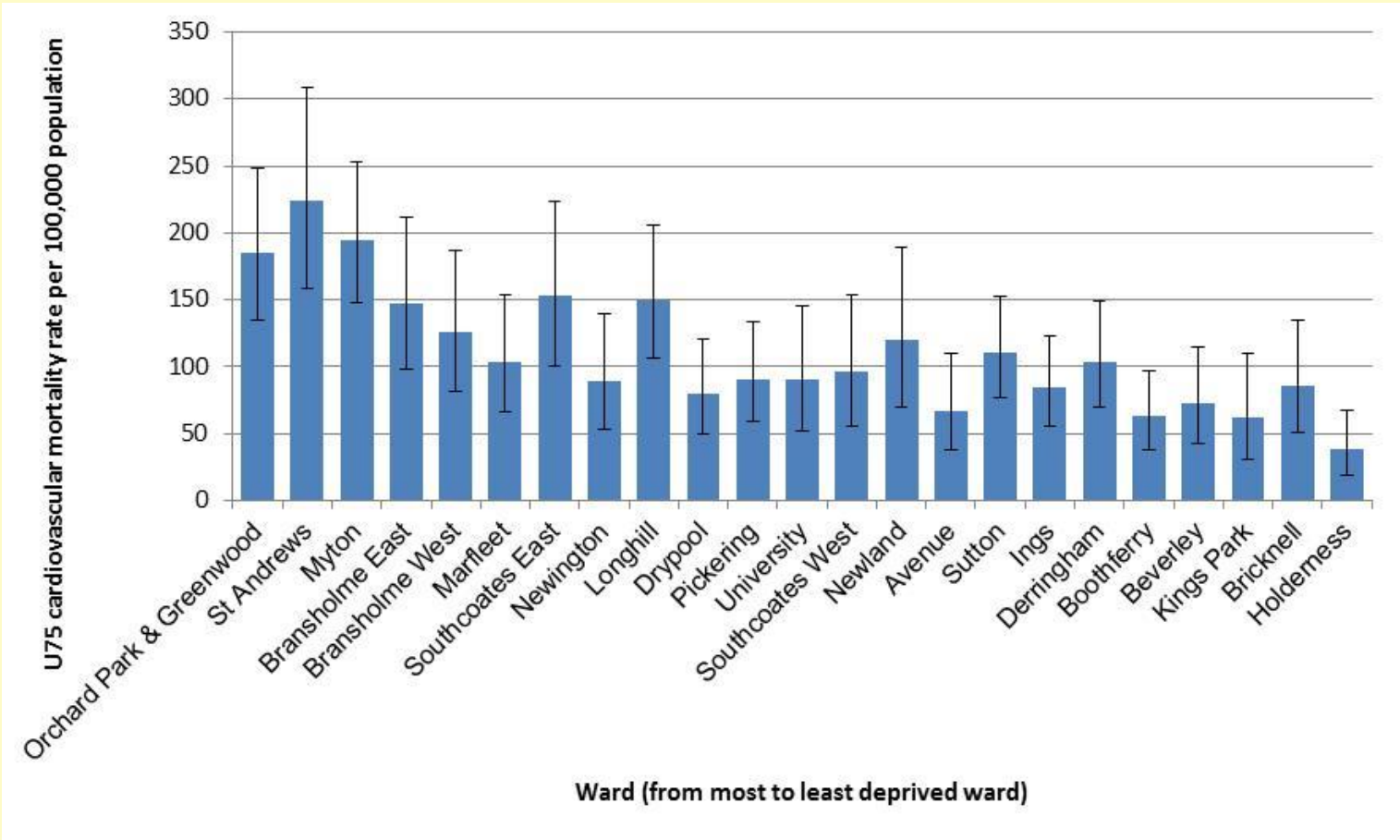
Life expectancy and healthy life expectancy



Performance 2013/17: A case for remodelled provision



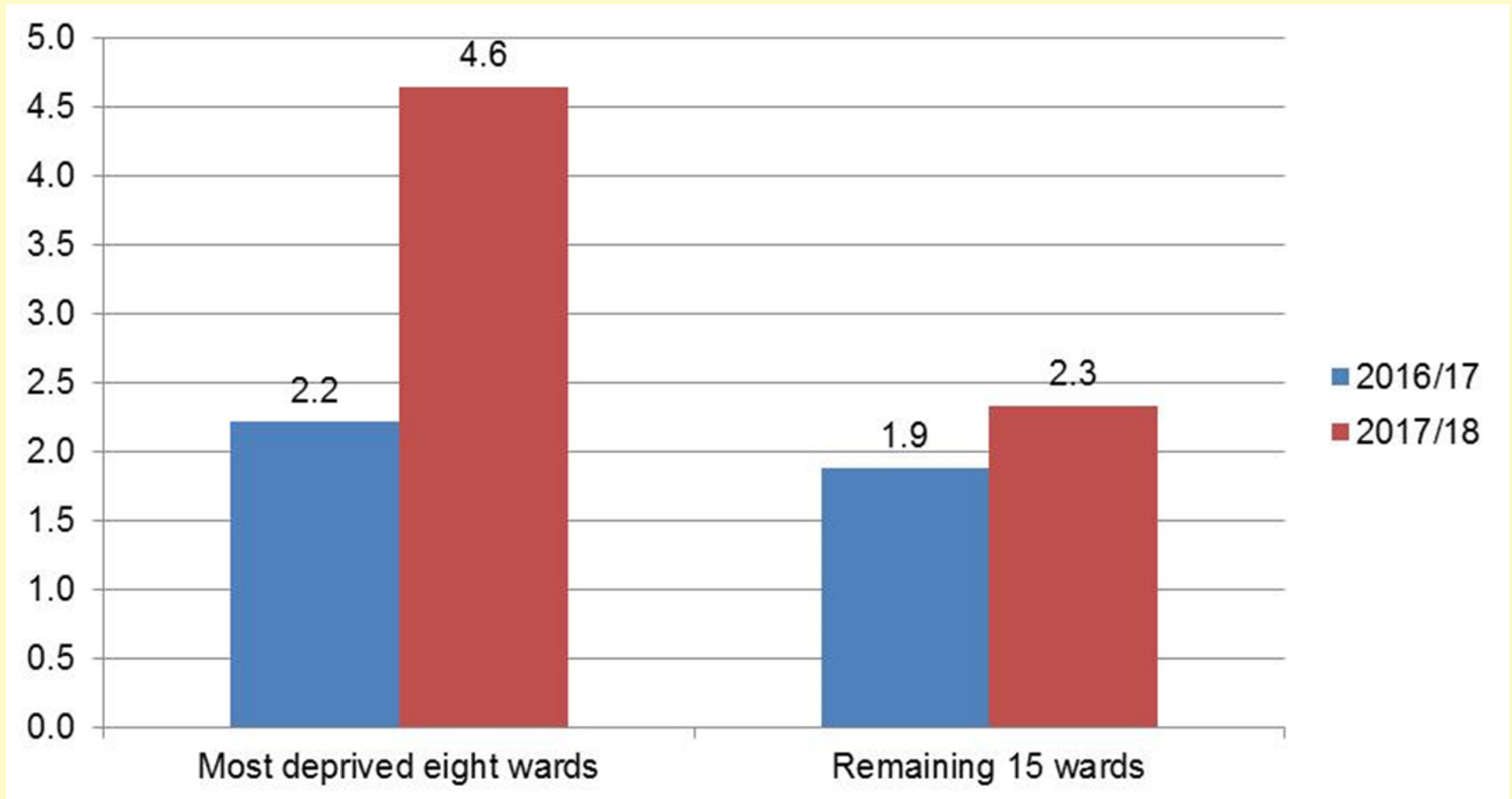
Premature cardiovascular mortality rate: A case for weighted remuneration



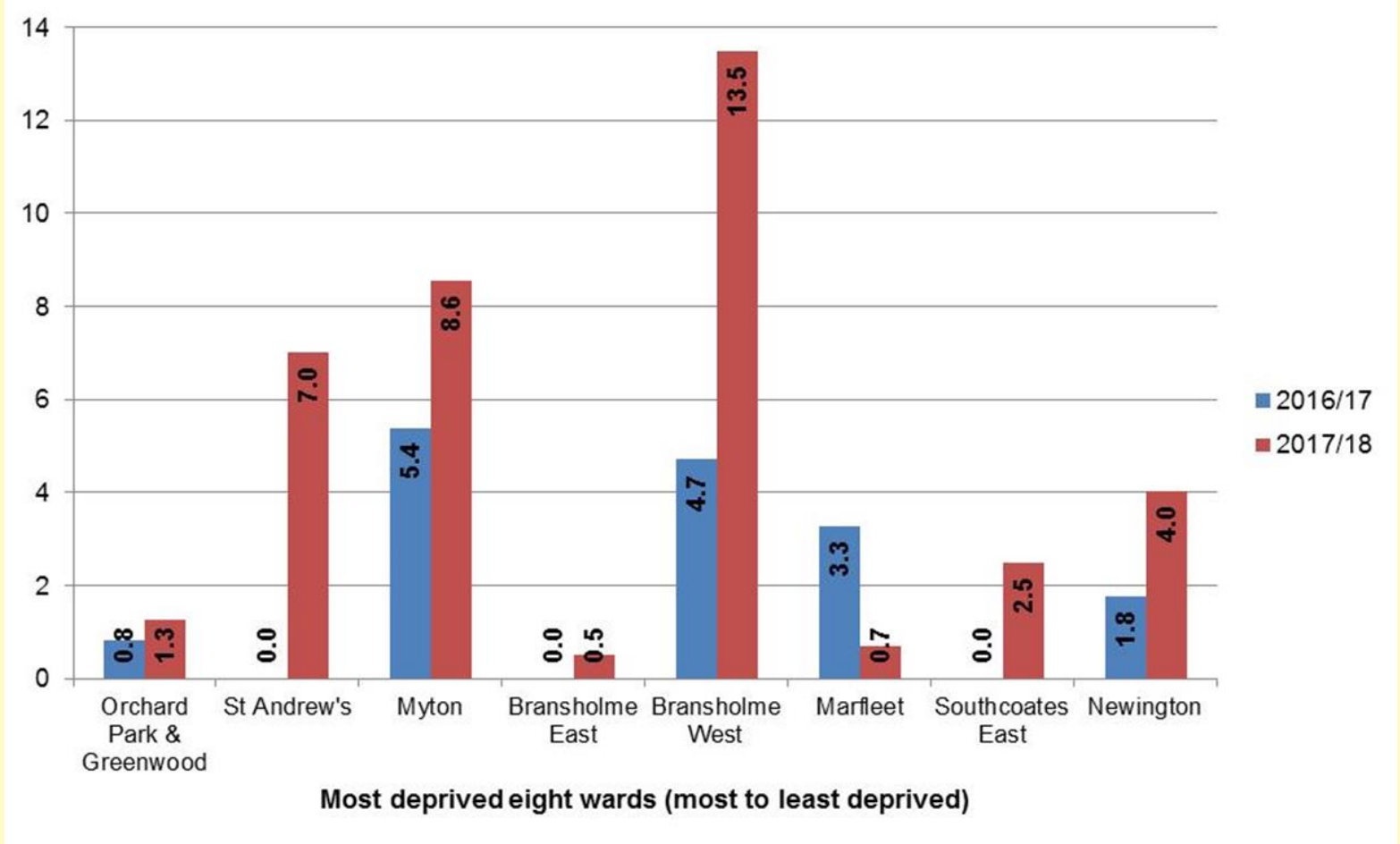
Incentivised model 2017/18

- Informed by intelligence
- Simple remuneration structure
- Adaptability
- Community delivery: ICE Creates

Percentage uptake 2017/18



Ward percentage uptake 2017/18



Future implications

- Financial challenges
- Reprocurement
- Long term outcomes
- Innovation